

# Electromechanical Lock Installation Instruction

## Specifications

Power Input	12/24V DC
Voltage Tolerance	±10%
Current Draw	280mA@12VDC; 140mA@24VDC
Version Changeable	Fail-safe/secure changeable
Operating Temperature	-10~45°C
Humidity	0~95% non-condensing
Lock bolt sensor switch output	SPDT rated 3A@125VAC
Solenoids testing	Tested to 1,000,000 cycles
Backset	30 mm
Weight	380 g

Fixing Lug

Europrofile key cylinder

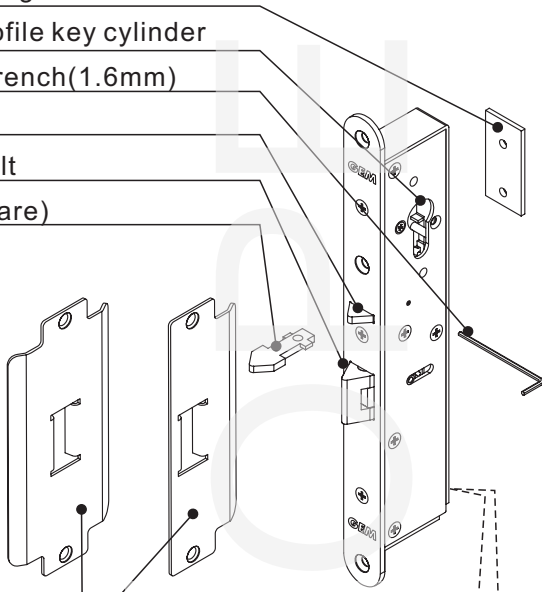
Allen wrench(1.6mm)

NIB

Lock bolt

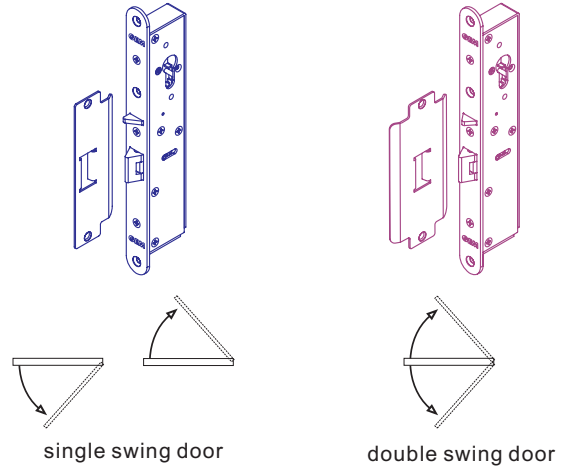
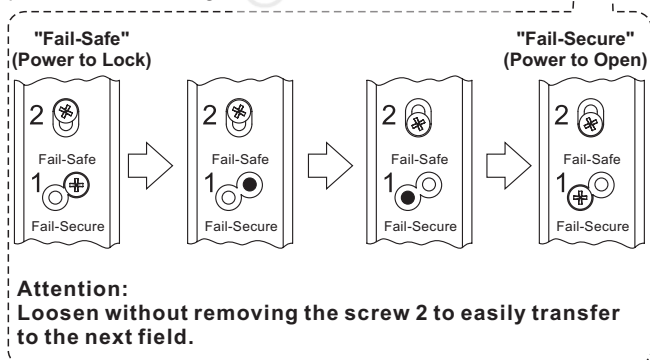
NIB (spare)

Strike Plate



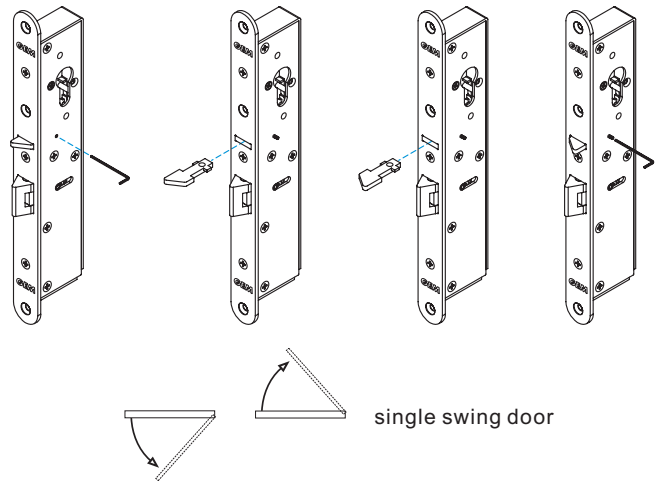
### Version Changeable

Take out the Screw 1, release the screw 2, move the position and then tighten the screw 2.

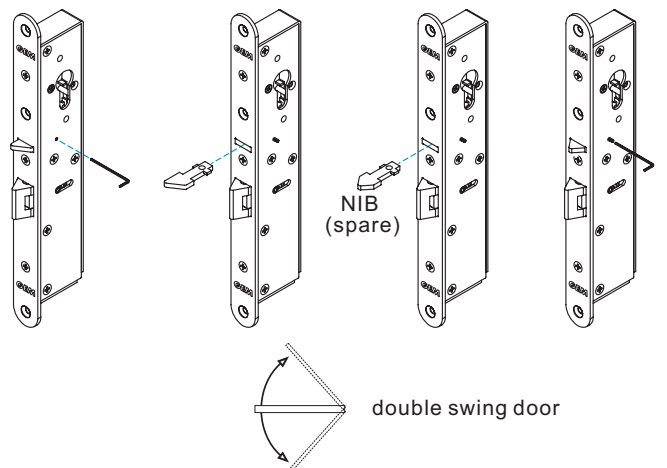


### NIB Changeable

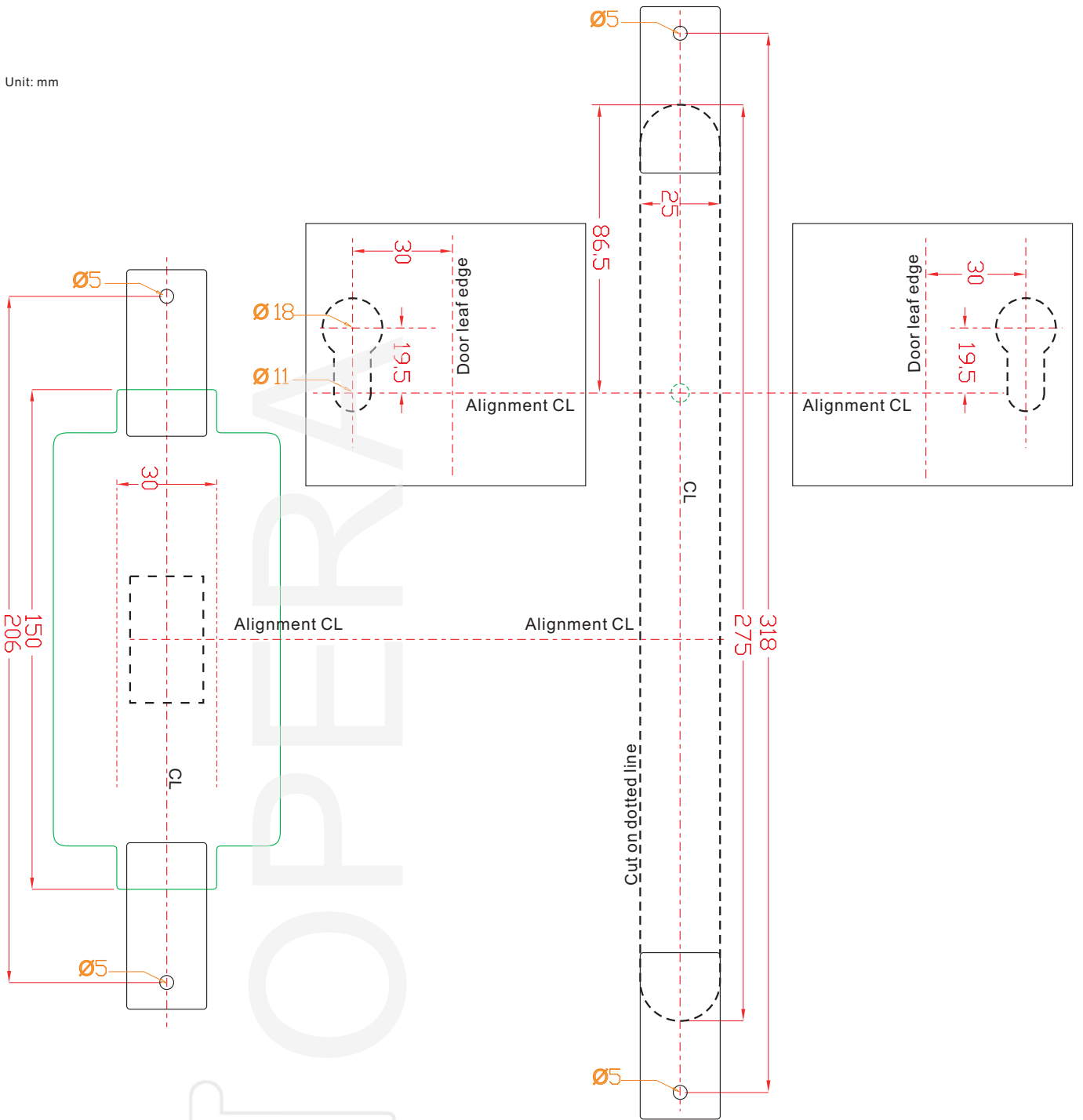
23000 is suitable for "single swing door" only. Mounting the lock will depend on your door application either right-hand or left-hand doors should be considered.



Single action door or double action door changeable by a NIB. We also provide optional spare NIB for "Double swing door" in case necessary.



Unit: mm



**Attention:** For "Single swing door" installation, Strike Plate and NIB can be adjusted thru the door opening and closing direction. (refer to page 1 for related NIB adjustment)

